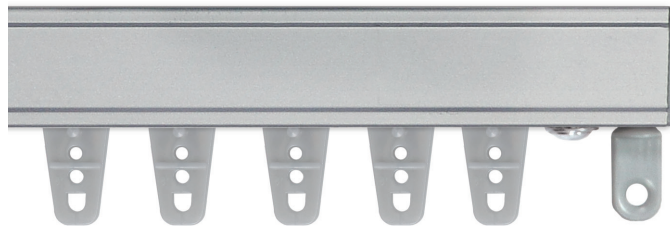


 KIRSCH®



ARCHITRAC®



P R A C T I C A L

Precision

A perfect union of efficiency and performance, it's no wonder Architrac® can be found in such a variety of spaces. From homes, businesses and commercial applications, Architrac® offers multiple configurable styles to suit your needs and exceed your expectations. This performance focused product will glide through your most demanding applications with ease.

OVERVIEW & BENEFITS

Why Architrac®?

The Architrac® heading system supports three popular drapery heading styles. Outstanding functionality for commercial applications, versatile enough for residential applications, Architrac® delivers performance for the most demanding applications. All assembled sets come complete and ready-to-install, and are available in baton and cord draw systems.

Benefits & Features

Ripplefold™

- Panels can be pressed flat, yet fall into folds
- Headings are suspended under the track
- No hooks or pins to install
- Stack back space is less than conventional Pleated draperies
- Draperies snap on and off carriers for easy installation
- Interior drapery appearance is identical to exterior-facing drapery appearance

Pleated

- Can be used with most track systems using slip-in or pin-on hooks
- Headings can be suspended under the track or over the face of the track to conceal hardware
- A popular drapery heading style

Cubicle

- An excellent choice for where privacy is necessary; perfect for hospitals or extended care facilities
- Smooth, snag free operation
- Made of extruded aluminum for extra durability
- Inner surface is center grooved for easy installation

Architrac® at a Glance

To help determine which system is right for your project, use the guideline below to select the best fit.

ARCHITRAC SERIES	94001	93001	94003	94004	94005	9046	9600
	BEST SELLER			BEST SELLER			

What is your preferred Draw type?

Cord Draw	•	•					
Hand Baton Draw	•	•	•	•	•	•	•
Briza™ Motorized NEW	•						

What is the preferred Drapery Heading type?

Pleated	•	•	•	•	•	•	•
Cubicle			•	•	•	•	•
Ripplefold™	•	•	•	•	•		

What is your mounting location?

Ceiling Mount	•	•	•	•	•	•	•
Wall Mount	•	•	•				•
Recessed Mount	•	•	•	•	•	•	•
Suspension Mount						•	•

Is an Angular Bend or Curve needed?

Can be bent	•	•	•		•	•	•
Can be curved	•	•	•		•	•	•

What is the Track Length?

One-Way Draw Max Track Length	UP TO 20'	UP TO 16'	UP TO 20'	UP TO 16'	UP TO 16'	UP TO 16'	UP TO 20'
Two-Way Draw Max Track Length	UP TO 40'	UP TO 32'	UP TO 40'	UP TO 32'	UP TO 32'	UP TO 32'	UP TO 40'

What are the Fabric Weight requirements?

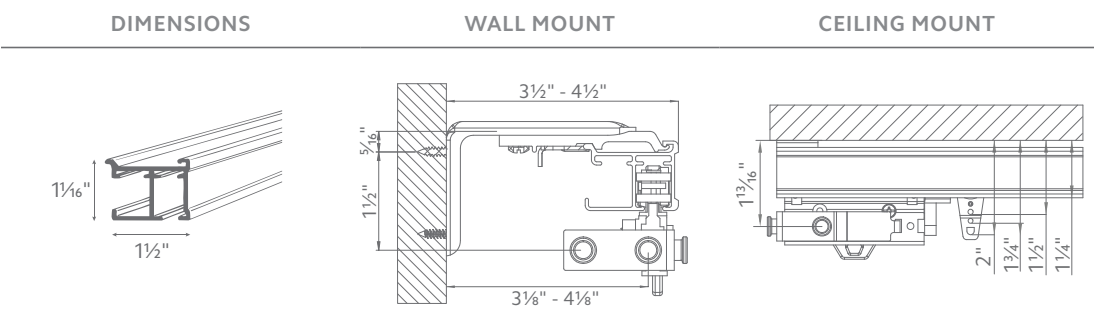
One-Way Pounds Per Linear Foot	4 LBS	2 LBS	4 LBS	4 LBS	4 LBS	4 LBS	4 LBS
Two-Way Pounds Per Linear Foot	4 LBS	2 LBS	4 LBS	4 LBS	4 LBS	4 LBS	4 LBS

ARCHITRAC®

Series 94001 | Cord Draw System

- Assembled sets includes all necessary components
- Most versatile cord draw track
- Heavy duty, ball bearing pulleys
- Heavy duty, wheeled (Ripplefold™) or ball bearing (pleated) carriers
- Can be curved or bent
- Wall or ceiling mount available
- Multiple draw options available
- Briza™ Motorization available

Additional Information



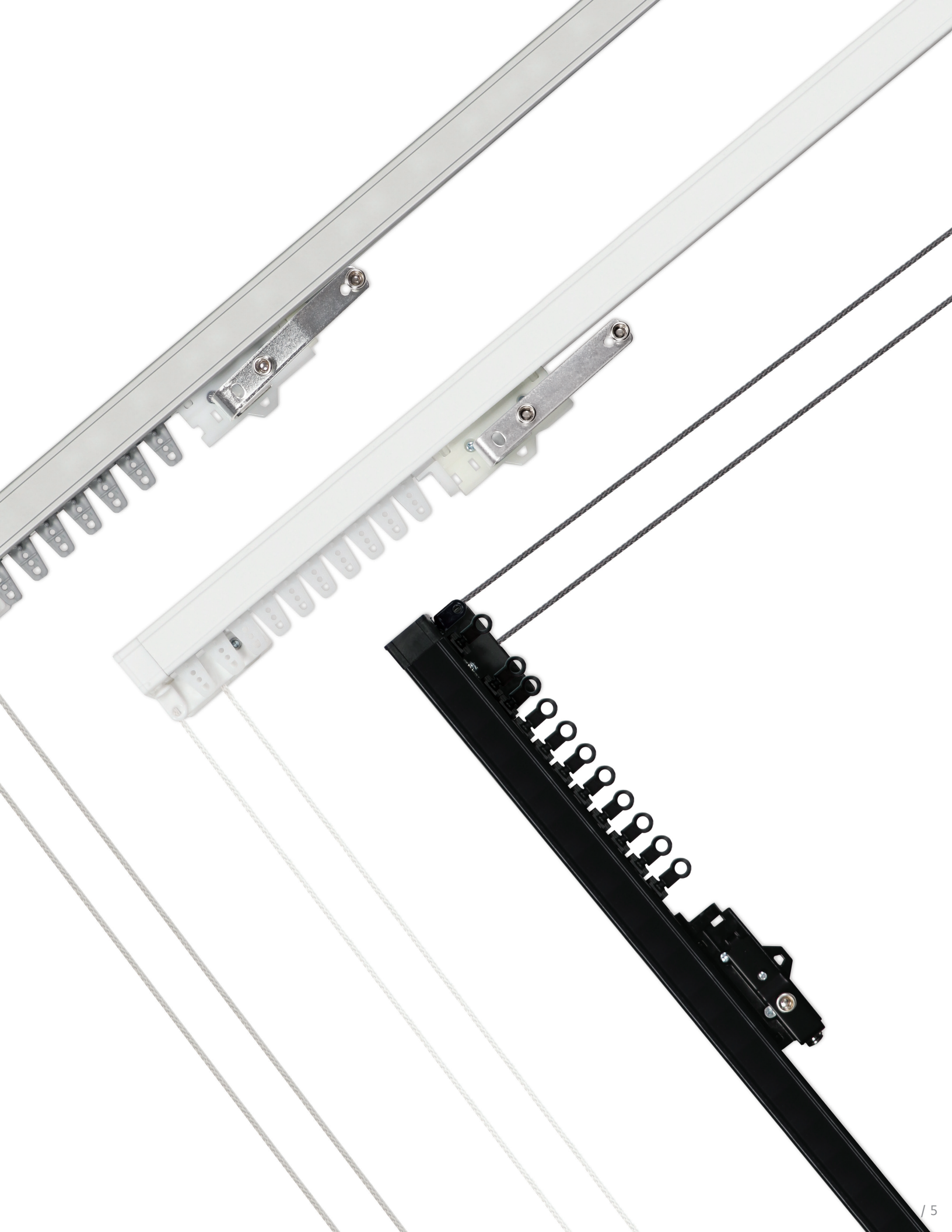
DRAW	MOUNT	MAXIMUM TRACK SET	MAXIMUM FABRIC WEIGHT PER PULLEY	LBS. PER DRAPERY FOOT
ONE-WAY	CEILING WALL RECESSED	20'	80 LBS. PER PULLEY	4 LBS.
TWO-WAY	CEILING WALL RECESSED	40'	160 LBS. PER PULLEY	4 LBS.

AVAILABLE BENDS



Available Colors



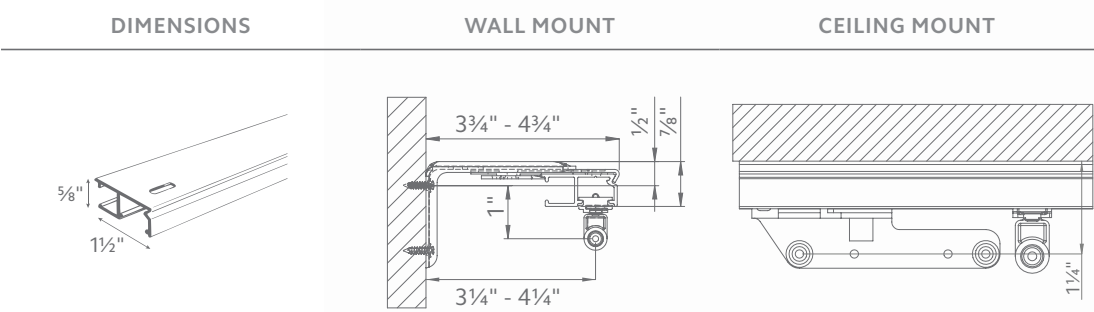


ARCHITRAC®

Series 93001 | Cord Draw System

- Assembled set includes all necessary components
- Low profile track (5/8")
- Self lubricating end pulleys
- Front loading carriers for easy installation
- Can be curved or bend
- Wall or ceiling mount available

Additional Information



DRAW	MOUNT	MAXIMUM TRACK SET	MAXIMUM FABRIC WEIGHT	LBS. PER DRAPERY FOOT
ONE-WAY	CEILING WALL RECESSED	16'	32 LBS. PER PULLEY	2 LBS.
TWO-WAY	CEILING WALL RECESSED	32'	64 LBS. PER PULLEY	2 LBS.

AVAILABLE BENDS

Style 1: Recess	Style 2: Bow	Style 3: Bay	Style 4: Corner	Style 5: Curve
				

Available Colors



White

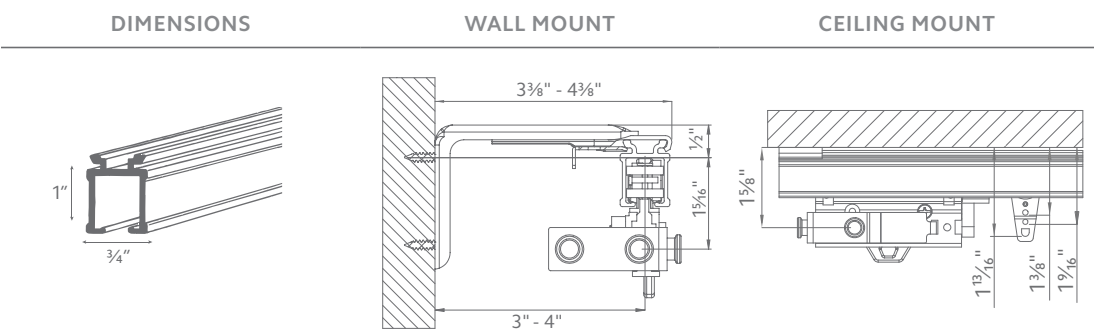


ARCHITRAC®

Series 94003 | Baton Draw System

- Assembled sets includes all necessary components
- Most versatile baton draw track
- Heavy duty, wheeled (Ripplefold™) or ball bearing (pleated) carriers
- Can be curved or bent
- Wall or ceiling mount available
- Baton options available

Additional Information



DRAW	MOUNT	MAXIMUM TRACK SET	MAXIMUM FABRIC WEIGHT	LBS. PER DRAPERY FOOT
ONE-WAY	CEILING WALL RECESSED	20'	80 LBS. PER PULLEY	4 LBS.
TWO-WAY	CEILING WALL RECESSED	40'	160 LBS. PER PULLEY	4 LBS.

AVAILABLE BENDS

Style 1: Recess	Style 2: Bow	Style 3: Bay	Style 4: Corner	Style 5: Curve
				

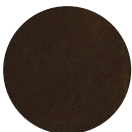
Available Colors



White



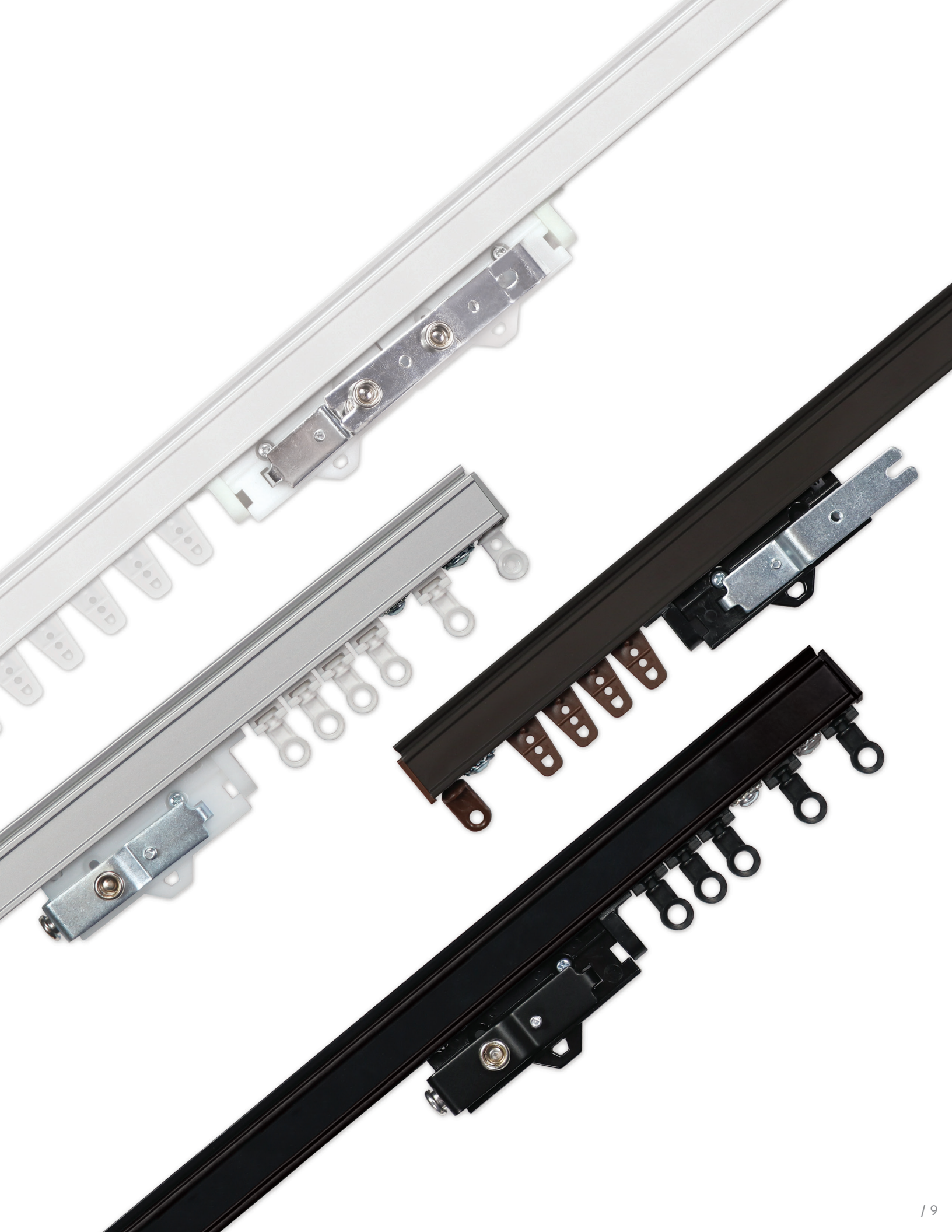
Anodized



Bronze



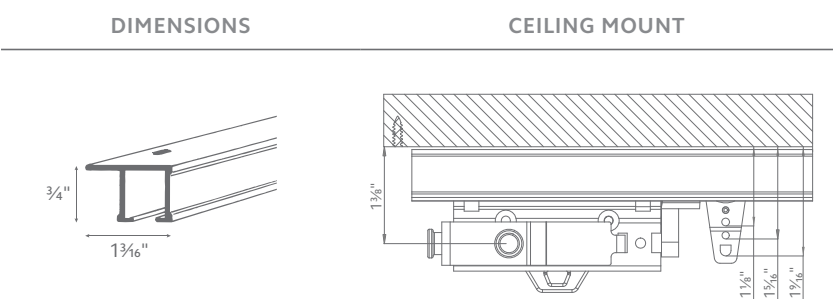
Black



Series 94004 | Baton Draw System

- Assembled sets includes all necessary components
- Low profile, baton draw rod (3/4")
- Heavy duty, wheeled (Ripplefold™) or ball bearing (pleated) carriers
- Cannot be curved or bent
- Ceiling mount only (Track pre-drilled 16" on center for direct ceiling mount)
- Baton options available

Additional Information



DRAW	MOUNT	MAXIMUM TRACK SET	MAXIMUM FABRIC WEIGHT	LBS. PER DRAPERY FOOT
ONE-WAY	CEILING RECESSED	16'	64 LBS. PER PULLEY	4 LBS.
TWO-WAY	CEILING RECESSED	32'	128 LBS. PER PULLEY	4LBS.

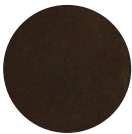
Available Colors



White



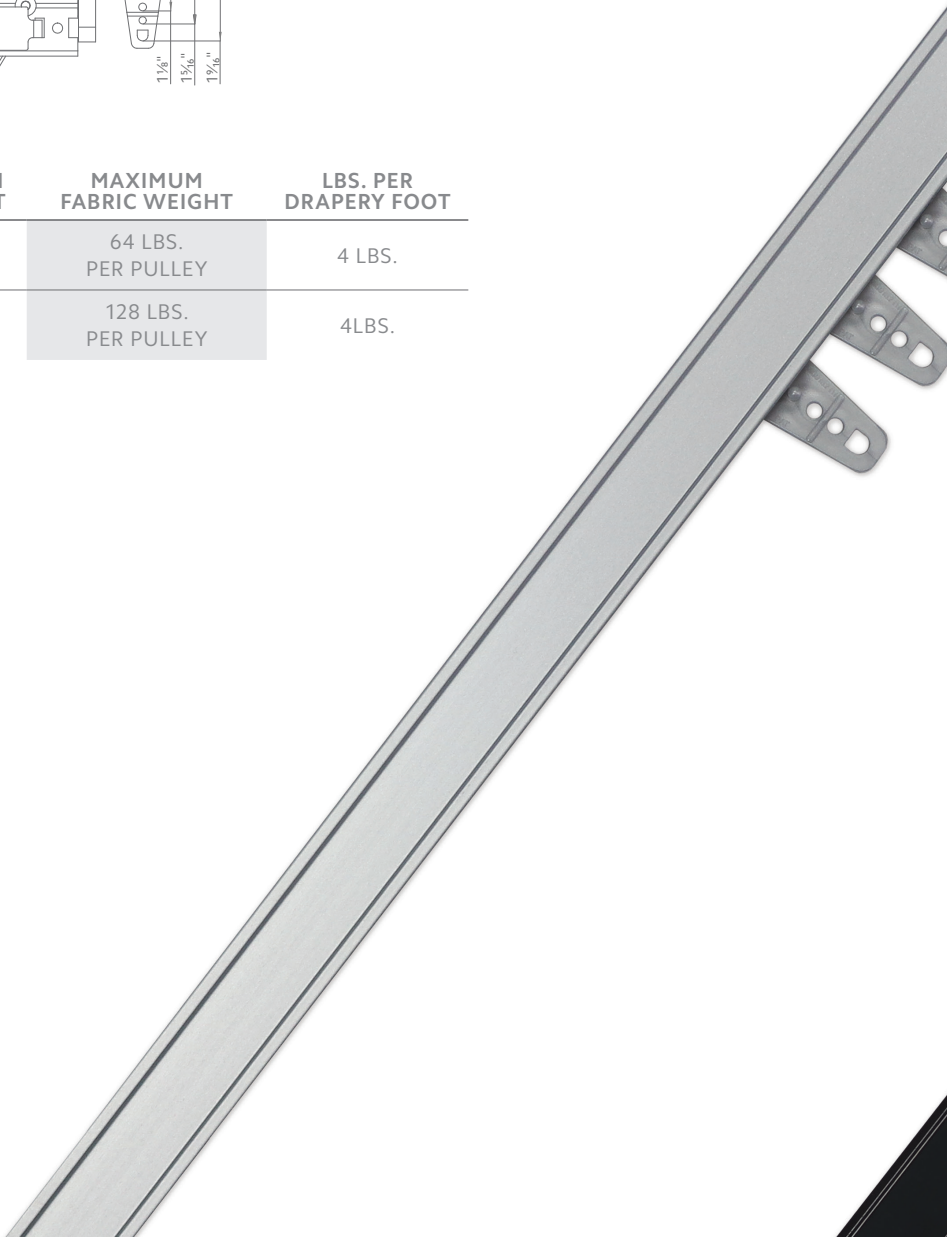
Anodized

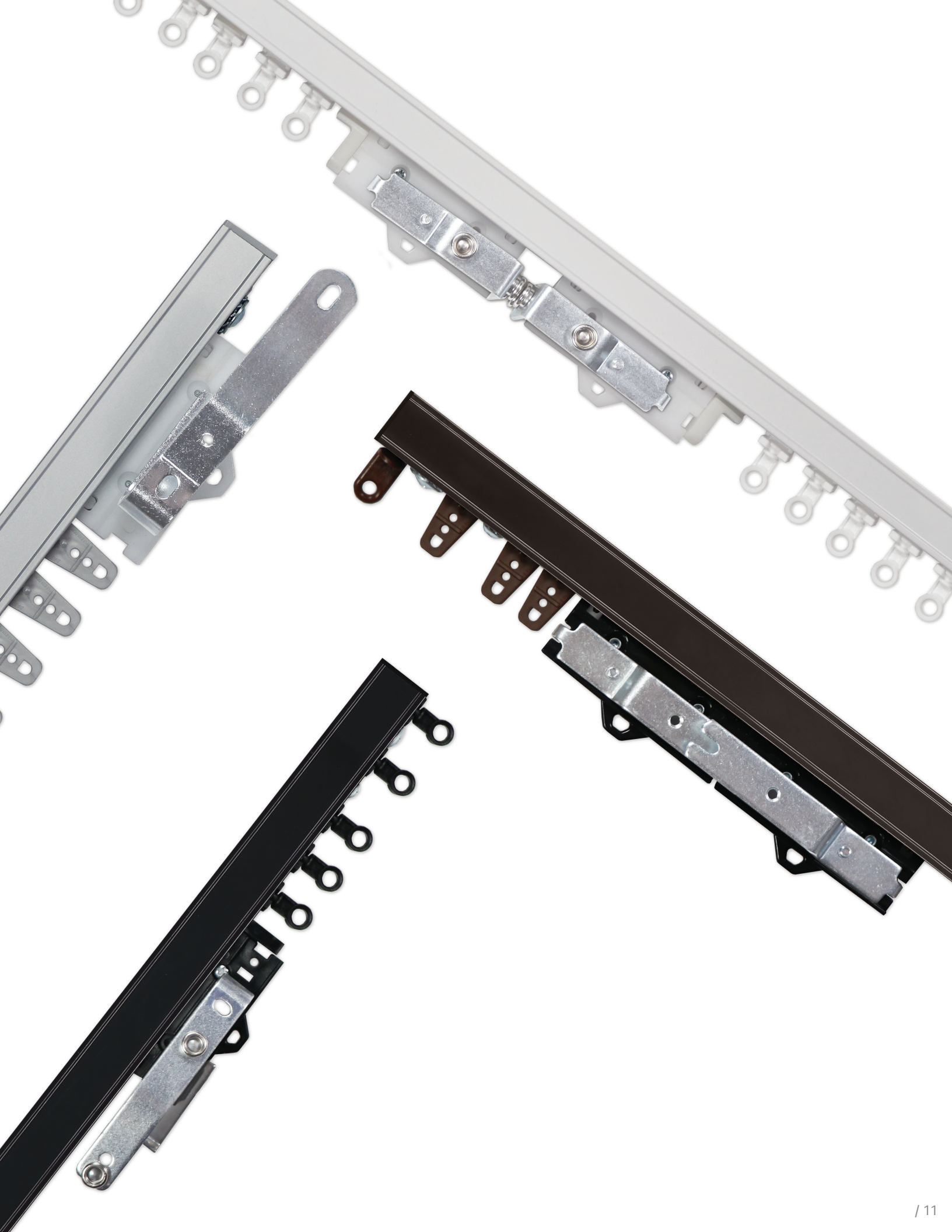


Bronze



Black



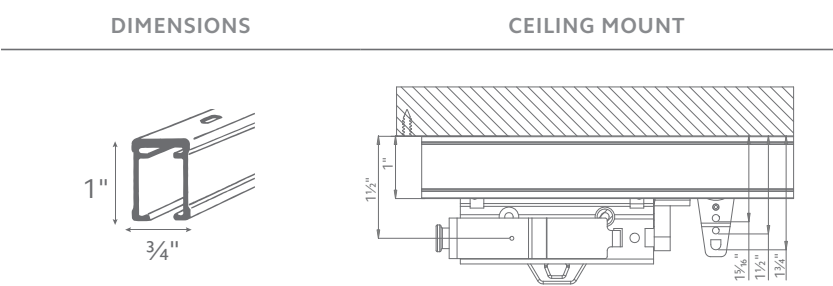


ARCHITRAC®

Series 94005 | Baton Draw System

- Assembled sets includes all necessary components
- Heavy duty, wheeled (Ripplefold™) or ball bearing (pleated) carriers
- Can be curved or bent
- Ceiling mount only (Track pre-drilled 16" on center for direct ceiling mount)
- Baton options available

Additional Information



DRAW	MOUNT	MAXIMUM TRACK SET	MAXIMUM FABRIC WEIGHT	LBS. PER DRAPERY FOOT
ONE-WAY	CEILING RECESSED	16'	64 LBS. PER PULLEY	4 LBS.
TWO-WAY	CEILING RECESSED	32'	128 LBS. PER PULLEY	4 LBS.

AVAILABLE BENDS				
Style 1: Recess	Style 2: Bow	Style 3: Bay	Style 4: Corner	Style 5: Curve
				

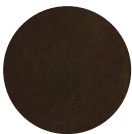
Available Colors



White



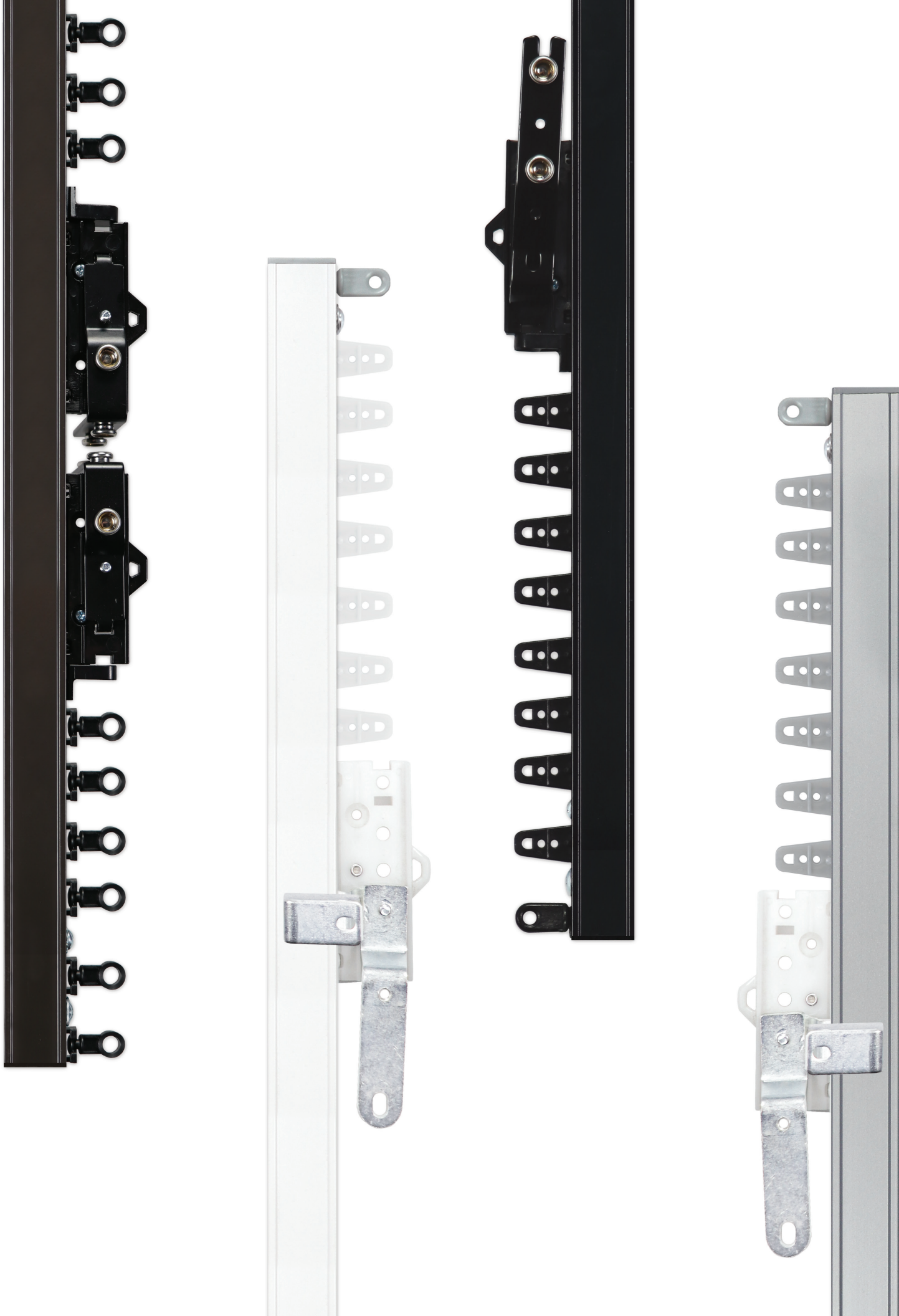
Anodized



Bronze



Black

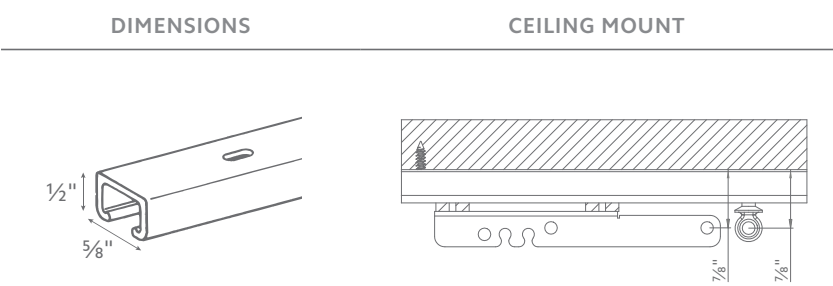


ARCHITRAC®

Series 9046 | Cubicle System

- Assembled sets includes all necessary components
- Low profile, cubicle track (1/2")
- Ideal for cubicle curtains for commercial applications
- Can be curved or bent
- Baton options available

Additional Information



DRAW	MOUNT	MAXIMUM TRACK SET	MAXIMUM FABRIC WEIGHT	LBS. PER DRAPERY FOOT
ONE-WAY	CEILING RECESSED SUSPENSION	16'	64 LBS. PER PULLEY	4 LBS.
TWO-WAY	CEILING RECESSED SUSPENSION	32'	128 LBS. PER PULLEY	4 LBS.

AVAILABLE BENDS				
Style 1: Recess	Style 2: Bow	Style 3: Bay	Style 4: Corner	Style 5: Curve
				

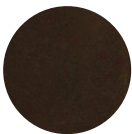
Available Colors



White



Anodized

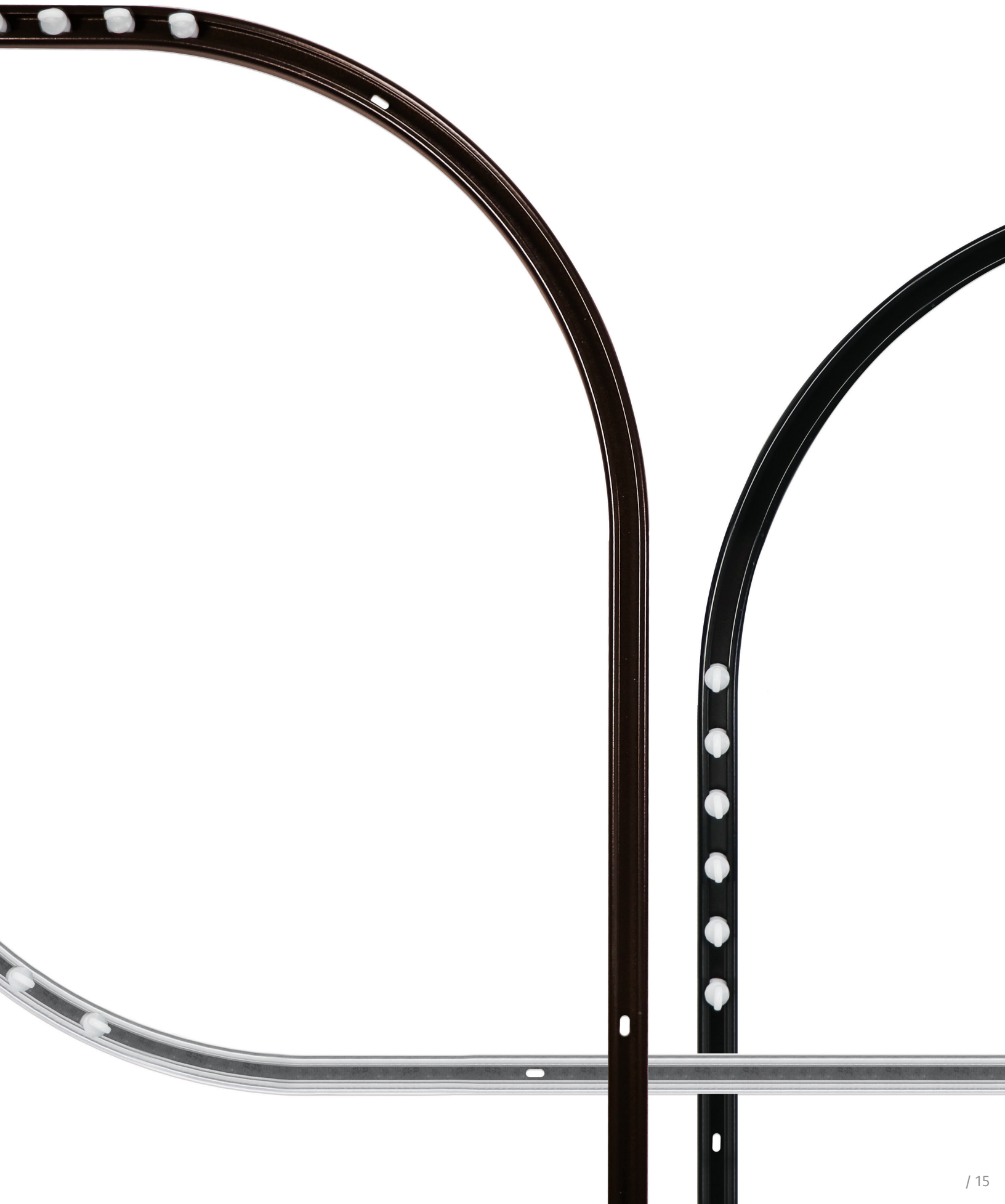


Bronze



Black



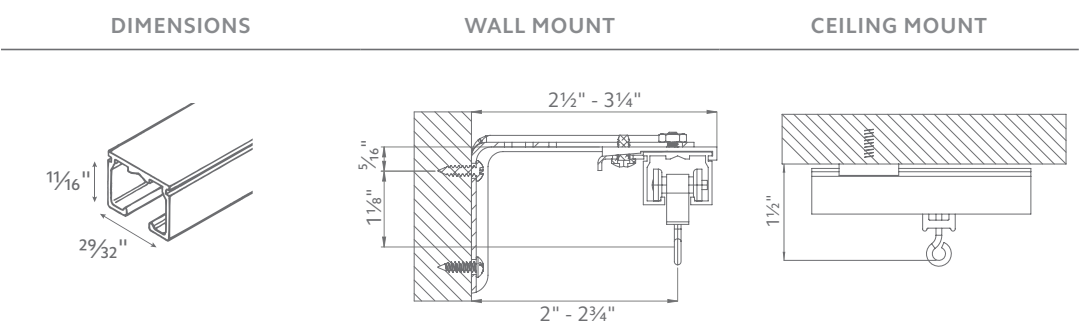


ARCHITRAC®

Series 9600 | Cubicle System

- Assembled sets includes all necessary components
- Heavy duty, cubicle track
- Ideal for cubicle curtains for commercial applications
- Splice available
- Carrier options available
- Wall, ceiling or suspension mount available
- Can be curved or bent

Additional Information



DRAW	MOUNT	MAXIMUM TRACK SET	MAXIMUM FABRIC WEIGHT	LBS. PER DRAPERY FOOT
ONE-WAY	CEILING WALL RECESSED SUSPENSION	20'	80 LBS. PER PULLEY	4 LBS.
TWO-WAY	CEILING WALL RECESSED SUSPENSION	40'	160 LBS. PER PULLEY	4 LBS.

AVAILABLE BENDS



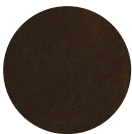
Available Colors



White



Anodized



Bronze



Black







BUCKINGHAM®
redefining luxury

DESIGNER METALS™
inspiring brilliance

WOOD TRENDS™
renewing traditions

WROUGHT IRON
forging artistry

RENAISSANCE™
awakening perfection